

Innovative Laboratory Automation Solutions

CellShot®

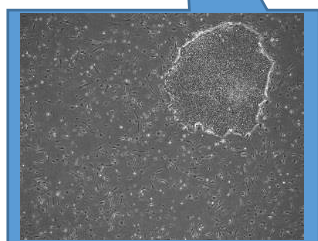
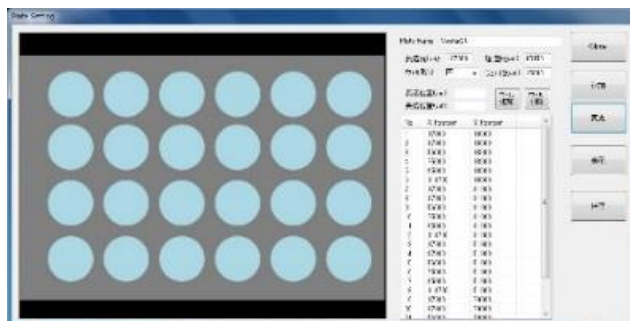
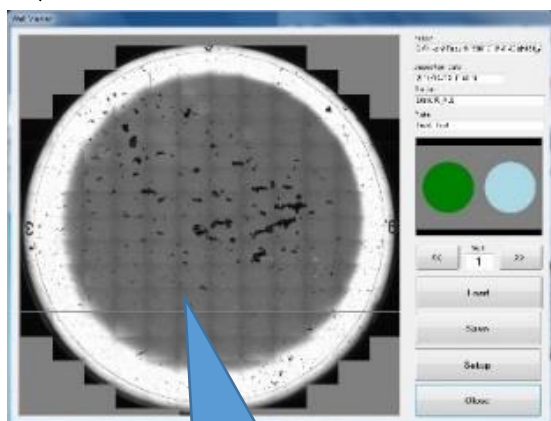


Auto Cell Imager with phase-contrast microscope

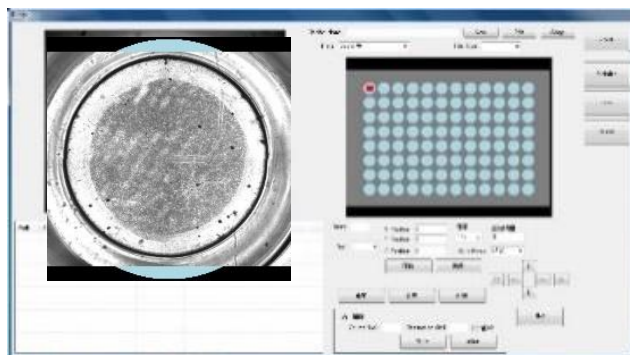
- ◆ CellShot is automated Cell Imager that store the image of the cell in the dish, micro-titer plate and other LabWare.
- ◆ Observe the Composite cell images of the target well by using tiling function.
- ◆ Easily select the imaging position as well as changing the magnification site by site by software.

CellShot

◆ Software



【Enlarged View】



Imaging Objects	100mm Dish, 60mmi Dish, SBS format Multiwell micro-titer plate * Use adapter tray for Dish
Imaging Method	Phase contrast (Invert)
Light source	Red LED Wavelength 627nm
Magnification & Field size	x 1.6 Approx. 3.90 x 2.97mm / x 4.0 Approx.1.56 x 1.19mm
Camera	High sensitive 1.38M pixel Monochrome Camera : Effective pixels 1344x1024 Pixel
Focus	Selective Fix or Autofocus
Throughput	Approx.. 1.2 sec. / shot (at fixed focus setting)
Imaging position	Optionally set the imaging position by software
Store file format	BMP、TIFF、JPEG
Interface	Socket communication (TCP/IP)、RS232C
Power Supply	AC100~240V 2A ≤ 47~63Hz
Dimension	H430mm x W290mm x D340mm
Weight	Approx. 25kg

Please feel free to contact followings any question or request.

RORZE Lifescience **RORZE Lifescience Inc.**

Zip Code:305-0035
1-9-8 Matsushiro, Tsukuba, Ibaraki, Japan
Tel :029-875-9330
Fax :029-875-9331
Web Site: <http://www.rorze-ls.com>

Distributor :