

RR491/RR492 SERIES

The RR491/RR492 frog leg arm vacuum robot realizes high positioning repeatability and highly reliable vacuum partition performance by adopting DDM (vacuum direct drive motor) for the drive section. The full-link arm mechanism realizes highly accurate positioning repeatability.

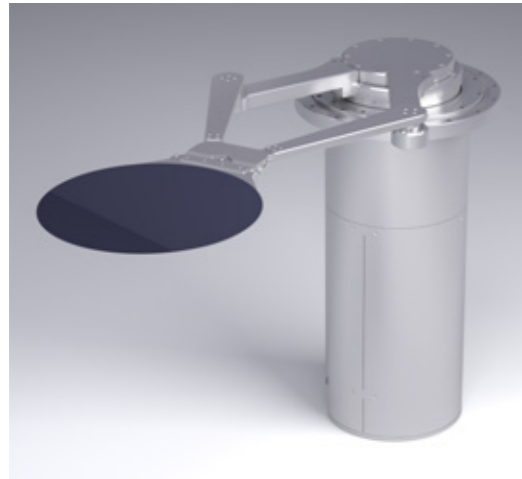


Image: RR491L300



Image: RR492L400

Features

- High accuracy
- Corresponding to ultrahigh vacuum
- High throughput
- Corresponding to the AWC option (wafer position compensation)

Main specifications (RR491)

- Work size to be handled
300 mm works, 200 mm works, and 150 mm works

Operating range

Arm length	L300
Minimum rotation range	φ 810
Distance of reached work center <small>Note 1</small>	770 mm
Z-axis	70 mm or 140 mm

Repeatability

R direction	± 0.05 mm
θ direction	± 0.03°
Z direction	± 0.05 mm

Note 1: The distance of reached work center can be customized by changing the arm length and finger length.

Main specifications (RR492)

- Work size to be handled
300 mm works, 200 mm works, and 150 mm works

Operating range

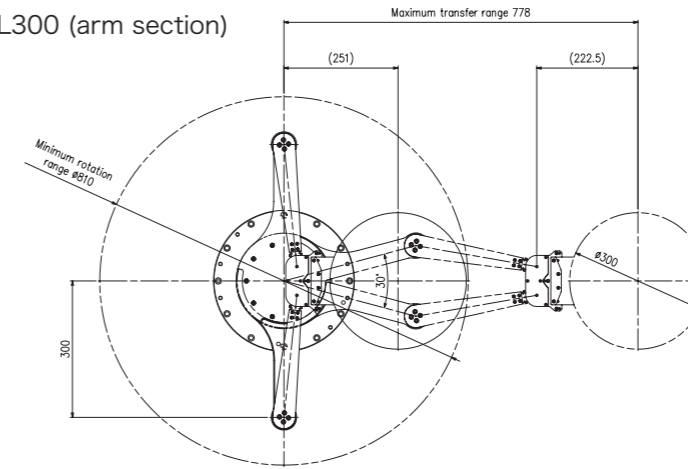
Arm length	L400
Minimum rotation range	φ 980
Distance of reached work center <small>Note 1</small>	1030 mm
Z-axis	70 mm or 140 mm

Repeatability

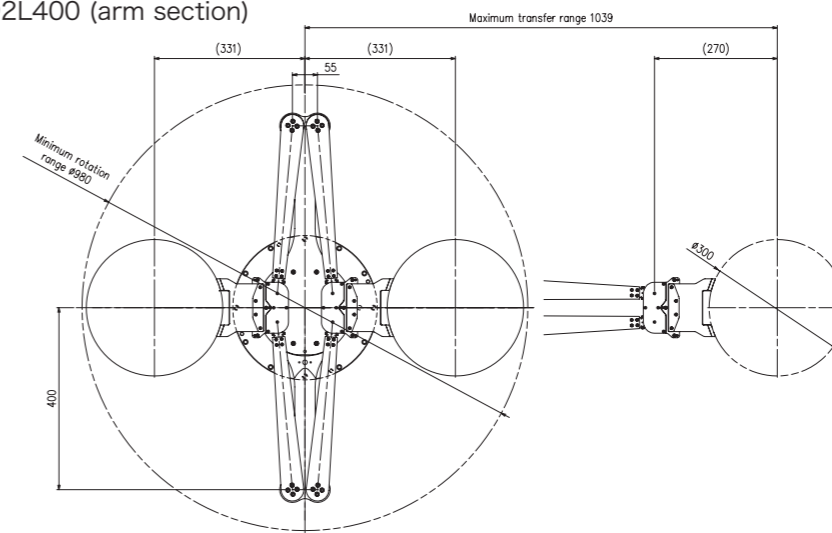
R direction	± 0.05 mm
θ direction	± 0.03°
Z direction	± 0.05 mm

Outside dimensions

RR491L300 (arm section)



RR492L400 (arm section)



RR491/RR492 (common section)

