

Load Port Selection Guide

Load Port compatible for 200 mm and 300 mm works

(Patent Application: 2013-182909)

One load port handles 300 mm FOUP, 300 mm FOSB, 300 mm OC (open cassette), and 200 mm OC. The original sensing system realizes the mapping operation and protrusion detection for 200 mm works and 300 mm works.

The 200 mm open cassette can be handled by mounting the stage adapter. Handling of 200 mm and 300 mm works can be easily switched.

Features

- One load port handles 300 mm and 200 mm work sizes.
- Can easily switch between handling 200 mm and 300 mm works.
- Glass works can be optionally handled.



Load port to be incorporated in stocker

The load port can be connected to the stockers manufactured by MURATA and DAIFUKU are being developed all over the world.

The special stage, which corresponds to the interface of the stocker hand, has the original POD clamping mechanism.

Features

- Corresponding to the interface of the stocker robot
- Original clamping mechanism is mounted.



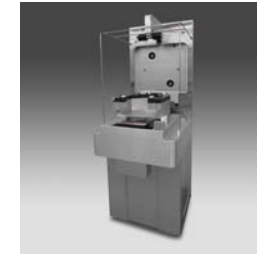
N2 purge

The problem of gas leakage due to inclination variance of the carrier is largely improved by adopting the floating type nozzle that automatically follows the inclination of the front, back, left, and right.

The low pressure loss large gas filter (0.003 μm) is built in, and purging of N2 100 L/min or more is realized.

Features

- Original floating nozzle is mounted.
- Gas unit corresponding to the carrier is mounted.



For the stocker



For the ENTEGRIS equipment

Load Port

RV200 SERIES



Photo: RV201-F07-001

Features

- Handling of the FOUP and Auto Door FOSB is available as a standard.
- Original mechanism for opening/closing the door and precise operation control bring high level of cleanliness.

Option

- Info pad pin and lockout pin
- RFID/Bar code
- Customization of indication lamp
- Corresponding to E84
- Corresponding to External I/O
- RS232C communication specifications
- N2 and XCDA purge
- Handling of 200 mm and 300 mm works

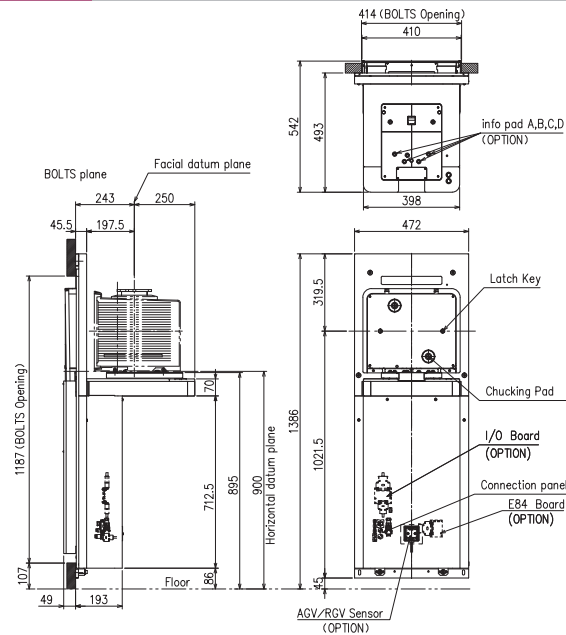
Main specifications

OC: Open Cassette, G: Handling of glass works, S: Stocker connection, P: Purge, T: Turn

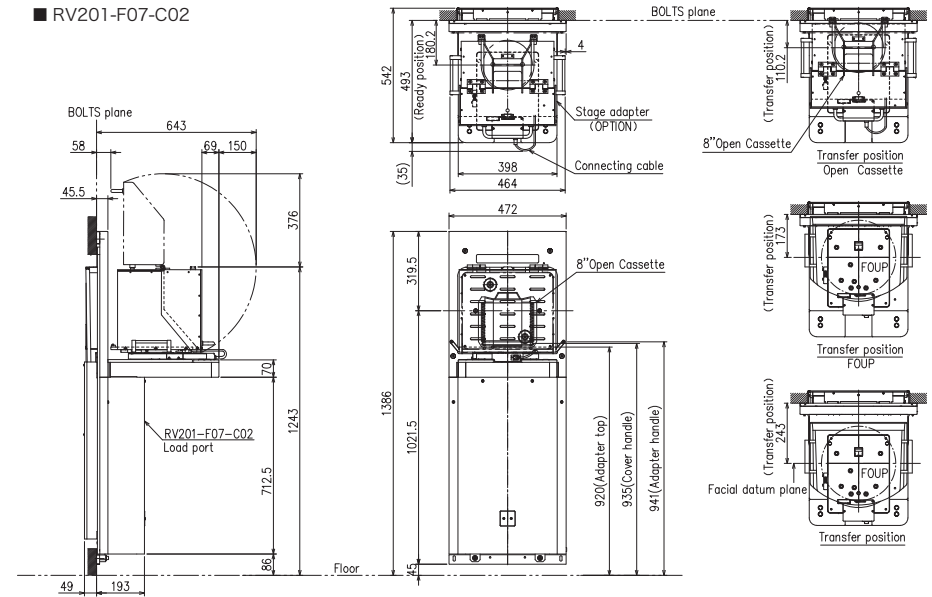
Model	Special specifications	Supply power	Compressed air	Vacuum air	N ₂
RV201-F07-0		24VDC±10% 6A	0.5 to 0.6 MPa	-60 to -80 kPa,	N/A
RV201-F07-C	OC				N/A
RV201-F07-G	G	24VDC±10% 9A	Flow rate: 10 L/min or more	Flow rate: 10 L/min or more	N/A
RV201-F07-T	S/T				N/A
RV201-F07-N	P/T				N ₂

Outside dimensions

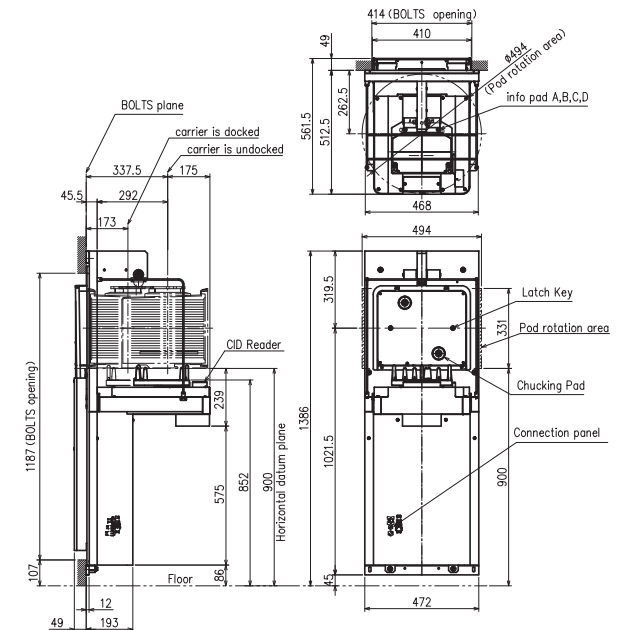
RV201-F07-001



RV201-F07-C02



RV201-F07-T01



- Atmospheric Robot
- Vacuum Robot
- Load Port
- Aligner
- EFEM
- Sorter
- Stocker
- Resist Handling System
- Vacuum Platform
- Bio-related System
- Software Solution
- Support Network