

Vacuum Robot

RR491/RR492 SERIES

The RR491/RR492 frog leg vacuum robot realizes high positioning repeatability and highly reliable vacuum partition performance by adopting DDM (vacuum direct drive motor) for the drive section. The full-link arm mechanism realizes highly accurate positioning repeatability.



Image: RR491L300

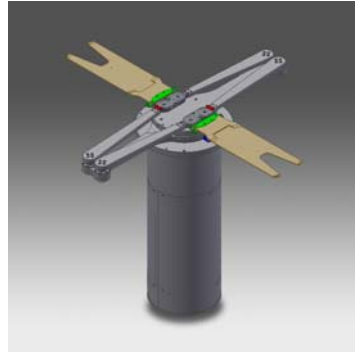


Image: RR492L400

Features

- High accuracy
- Corresponding to ultrahigh vacuum
- High throughput
- Corresponding to the AWC option (wafer position compensation)

Main specifications (RR491)

- Work size to be handled
300 mm works, 200 mm works, and 150 mm works

■ Operating range

Arm length	L300
Minimum rotation range	φ 810
Distance of reached work center <small>Note 1</small>	770 mm
Z-axis	70 mm or 140 mm

■ Repeatability

R direction	± 0.05 mm
θ direction	± 0.03°
Z direction	± 0.05 mm

Note 1: The distance of reached work center can be customized by changing the arm length and finger length.

Main specifications (RR492)

- Work size to be handled
300 mm works, 200 mm works, and 150 mm works

■ Operating range

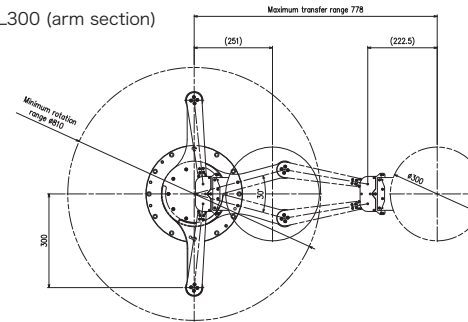
Arm length	L400
Minimum rotation range	φ 980
Distance of reached work center <small>Note 1</small>	1030 mm
Z-axis	70 mm or 140 mm

■ Repeatability

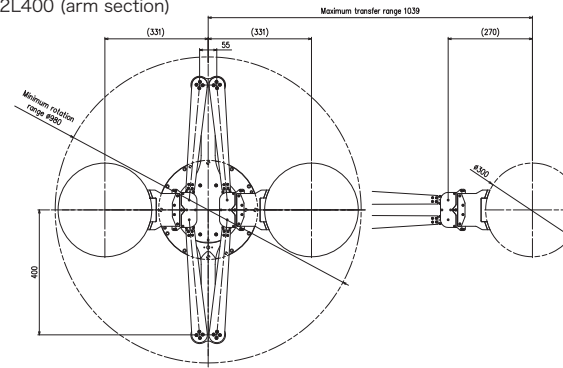
R direction	± 0.05 mm
θ direction	± 0.03°
Z direction	± 0.05 mm

Outside dimensions

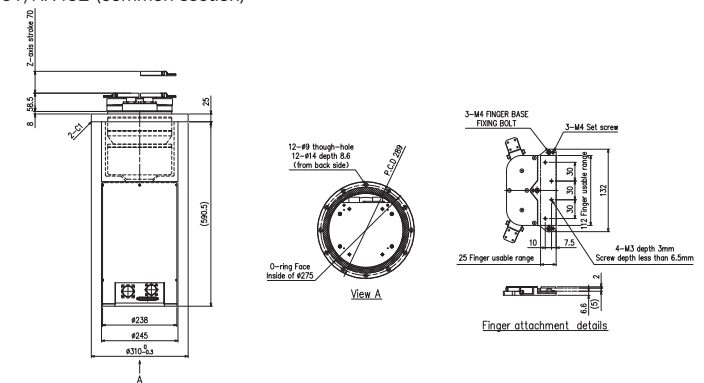
■ RR491L300 (arm section)



■ RR492L400 (arm section)



■ RR491/RR492 (common section)



Atmospheric Robot
Vacuum Robot
Load Port
Aligner
EFEM
Sorter
Stocker
Recipe Handling System
Vacuum Platform
Bio-related System
Software Solution
Support Network