

Vacuum Robot

RR481 SERIES



Image: RR481L230

The RR481 boomerang arm vacuum robot (double arms) realizes high positioning repeatability and highly reliable vacuum partition performance by adopting DDM (vacuum direct drive motor) for the drive section. The arm mechanism driven by the steel belt enables the use of long end effector despite of the small rotation area.

Features

- Small rotation area (small footprint)
- Transferring of the long finger and long distance
- Corresponding to the narrow gate opening size (15 mm)
- High accuracy
- Corresponding to ultrahigh vacuum
- High throughput
- Corresponding to the AWC option (wafer position compensation)

Main specifications

■ Work size to be handled

300 mm works, 200 mm works, 150 mm works and square substrates

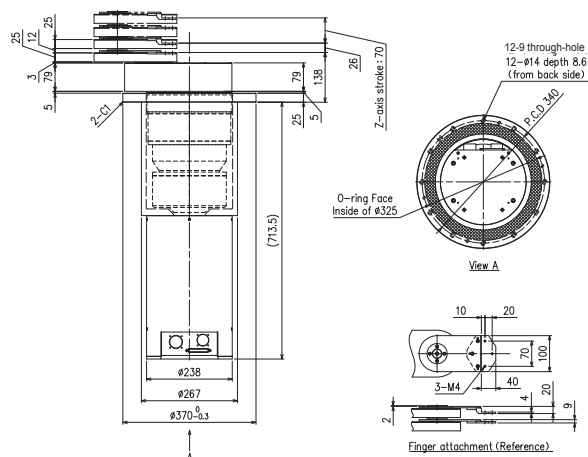
■ Repeatability

R direction	± 0.1 mm
θ direction	± 0.03°
Z direction	± 0.05 mm

■ Operating range

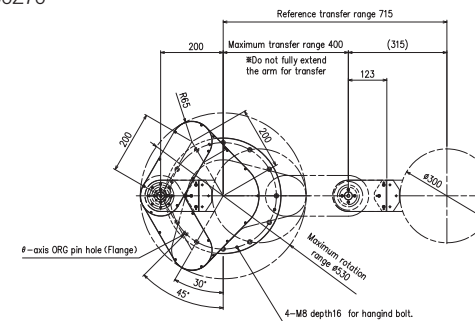
Arm length	L300	L230	L200
Minimum rotation range	φ 730	φ 590	φ 530
Distance of reached work center	1110 mm	830 mm	710 mm
Z-axis	70 mm or 140 mm		

Outside dimensions (common to each arm length)

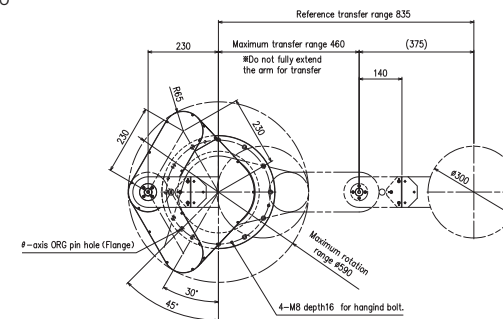


Outside dimensions

■ RR481L200Z70



■ RR481L230Z70



■ RR481L300Z70

