

---

## Cell and Tissue Staining Expert Genostaff Joins the RORZE Group!

---

Genostaff became a wholly-owned subsidiary of RORZE Lifescience Inc.

～For the expansion of the RORZE Group's life science business and the advancement of future cutting-edge medicine and pharmaceuticals～

RORZE Lifescience has been a consolidated subsidiary of our company since 2017, and it plays a key role in our group's life sciences sector. Based on the unique technologies and experience cultivated through the development of semiconductor manufacturing equipment, the company has introduced automated cell culture systems to pharmaceutical manufacturers and research institutions, mainly in Japan, that are working in cutting-edge fields of drug discovery research and regenerative medicine.

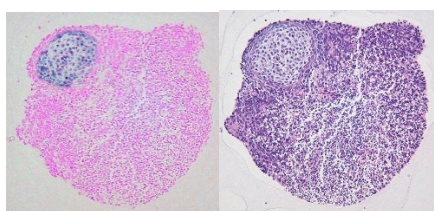
On the other hand, Genostaff, backed by its proven technical expertise, has been entrusted with numerous research projects related to tissue staining and gene function analysis from academia, primarily universities, and pharmaceutical companies. In particular, the company possesses exceptional know-how in molecular pathology and cell and tissue staining, such as In situ Hybridization.

This move marks a step towards addressing the latest needs in drug discovery research and academia and accelerating the bridge to clinical fields in the cell-related domains of advanced medicine and pharmaceuticals, which are areas of great interest to humanity. Specifically, efforts are already underway to enhance the services provided to Genostaff's customers, including the establishment of a research center within RORZE Lifescience's facilities to build a test contract system that meets reliability standards. Moving forward, it is expected that the strengthened collaboration between the two companies will contribute to the growth of our group's life sciences sector by delivering even greater value to customers.

As a result of this transaction, Genostaff is expected to become a consolidated subsidiary of our company. The impact on our consolidated financial results for this fiscal year (ending February 2025) is expected to be minimal.

### Comment by NOGUCHI Yoichi, President of Genostaff

"Since the company's establishment in 2002, we have prioritized delivering highly reliable experimental results in our contract analysis of molecular pathology. I am confident that by combining the know-how Genostaff has developed, supported by many researchers, with RORZE Lifescience's automation technology, we can contribute to further advancements in life sciences."



Genostaff Corporation's Unique Cell and Tissue Staining Technology

(A Proven Track Record with Universities, Government Research Institutions, and Pharmaceutical Companies)



In-house Developed Automated Paraffin Embedding System CT-Pro20

(Development of Automated Products as Solutions for Molecular Pathology Analysis)

[Overview of Genostaff] <https://genostaff.com>

(1) Company Name: Genostaff Co., Ltd (2) Location: GS Building, 2-5-8 Yayoi, Bunkyo-ku, Tokyo (3) Established: February 1, 2002  
(4) President: NOGUCHI Yoichi (5) Capital: 42 million yen (6) Sales: 238 million yen (fiscal year ending March 2024) (7) Number of Employees: 12 (excluding 4 directors) (8) Main Business Activities: Contract research for tissue staining and gene function analysis, sales of equipment and ISH-related products

### [Contact Information]

RORZE Corporation Corporate Planning Office Administration Department (Fujii, Usui) TEL: +81-84-960-0205